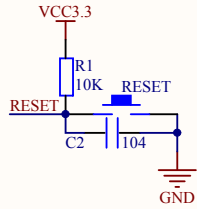
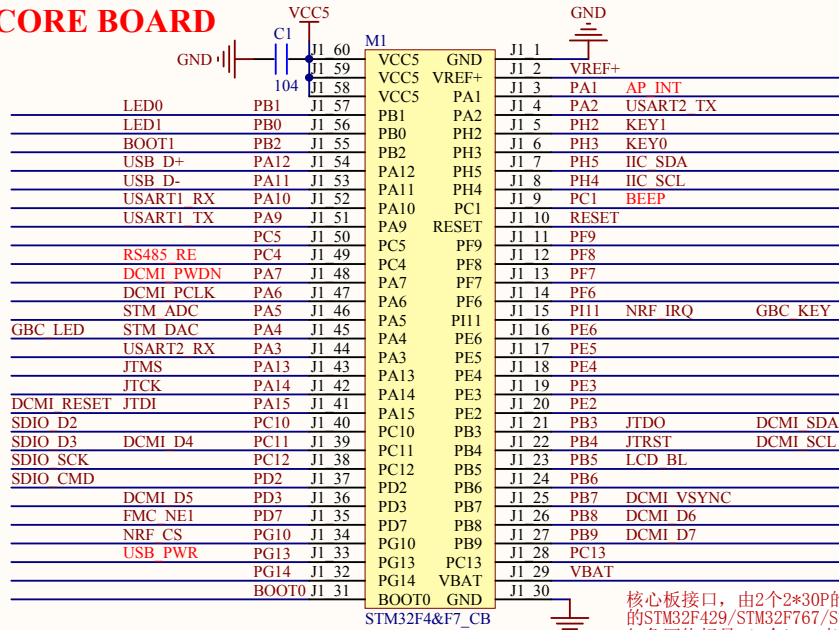


RESET



CORE BOARD



STM32F4&F7_CB

GND

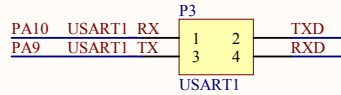
核心板接口，由2个2*30P的3710F端子(母)组成，可插ALIENTEK的STM32F429/STM32F767/STM32H743等核心板
红色网络标号(5个)：表示和阿波罗底板的差异，在阿波罗底板上这些网络是接在AT8574上的，这里改成接网络芯片的相关引脚，以尽量减少和阿波罗底板的差异

FMC D15	PD10	J2 60	PD10	PB11	J2 1	PB11	USART3 RX
FMC D14	PD9	J2 59	PD9	PB10	J2 2	PB10	USART3 TX
FMC D13	PD8	J2 58	PD8	PH8	J2 3	PH8	DCMI HREF
FMC D12	PE15	J2 57	PE15	PH12	J2 4	PB12	I2WIRE DQ
FMC D11	PE14	J2 56	PE14	PB13	J2 5	PB13	SPI2 SCK
FMC D10	PE13	J2 55	PE13	PB14	J2 6	PB14	SPI2 MISO
FMC D9	PE12	J2 54	PE12	PB15	J2 7	PB15	SPI2 MOSI
FMC D8	PE11	J2 53	PE11	PH6	J2 8	PH6	T SCK
FMC D7	PE10	J2 52	PE10	PH7	J2 9	PH7	T PEN
FMC D6	PE9	J2 51	PE9	PH9	J2 10	PH9	LCD R3
FMC D5	PE8	J2 50	PE8	PH10	J2 11	PH10	LCD R4
FMC D4	PE7	J2 49	PE7	PH11	J2 12	PH11	LCD R5
FMC D3	PD1	J2 48	PD1	PG3	J2 13	PG3	T MISO
FMC D2	PD0	J2 47	PD0	PD13	J2 14	PD13	FMC A18
FMC D1	PD15	J2 46	PD15	PG6	J2 15	PG6	LCD R7
FMC D0	PD14	J2 45	PD14	PC6	J2 16	PC6	DCMI D0
FMC NBL1	PE1	J2 44	PE1	PC7	J2 17	PC7	DCMI D1
FMC NBL0	PE0	J2 43	PE0	PC8	J2 18	PC8	DCMI D2
WK UP	PA0	J2 42	PA0	PC9	J2 19	PC9	DCMI D3
T MOSI	PI3	J2 41	PI3	PC10	J2 20	PC10	DCMI D4
T CS	PI8	J2 40	PI8	PD12	J2 21	PD12	FMC A17 ALE
LCD B7	PI7	J2 39	PI7	PD5	J2 22	PD5	FMC NWE
LCD B6	PI6	J2 38	PI6	PD11	J2 23	PD11	FMC A16 CLE
LCD B5	PI5	J2 37	PI5	PH12	J2 24	PH12	LCD R6
LCD B4	PI4	J2 36	PI4	PG12	J2 25	PG12	NRF CE
LCD B3	PG11	J2 35	PG11	PD4	J2 26	PD4	FMC NOE
LCD G5	PI0	J2 34	PI0	PD6	J2 27	PD6	FMC NWAIT
LCD G6	PI1	J2 33	PI1	PH15	J2 28	PH15	LCD G4
LCD G7	PI2	J2 32	PI2	PH14	J2 29	PH14	LCD G3
				PH13	J2 30	PH13	LCD G2

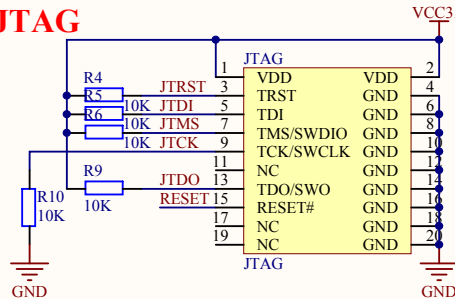
IO

GND	P1	PE3	P2	GND
PE4	1	PE5	2	PB4
PE6	3	PE7	4	PB6
PE8	5	PE9	6	PB8
PE10	7	PE11	8	PC13
PE12	9	PE13	10	PG13
PE14	11	PE15	12	PD7
PE16	13	PE17	14	PD2
PE18	15	PE19	16	PD11
PE20	17	PE21	18	PD12
PE22	19	PE23	20	PD13
PE24	21	PE25	22	PD14
PE26	23	PE27	24	PD15
PE28	25	PE29	26	PD16
PE30	27	PE31	28	PD17
PE32	29	PE33	30	PD18
PE34	31	PE35	32	PD19
PE36	33	PE37	34	PD20
PE38	35	PE39	36	PD21
PE40	37	PE41	38	PD22
PE42	39	PE43	40	PD23
PE44	41	PE45	42	PD24
PE46	43	PE47	44	PD25
PE48	45	PE49	46	PD26
PE50	47	PE51	48	PD27
PE52	49	PE53	50	PD28
PE54	51	PE55	52	PD29

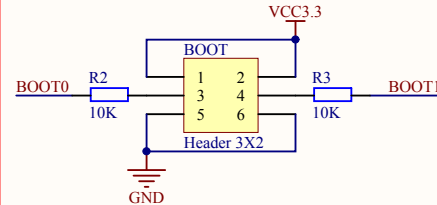
USB_UART/USART1



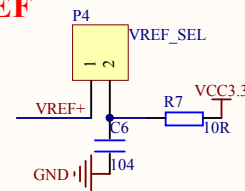
JTAG



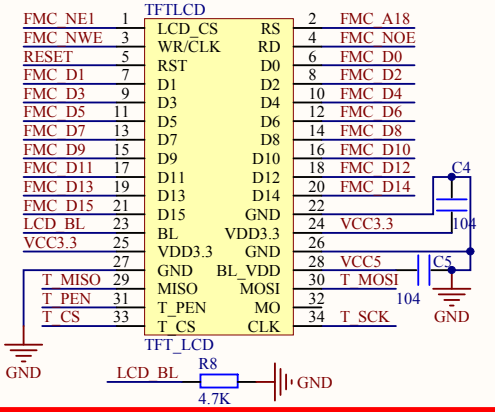
BOOT



VREF



LCD(MCU)

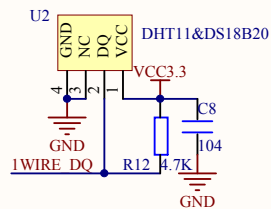


开源电子网：www.openedv.com

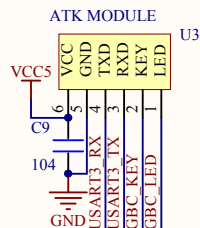
Title:	APOLLO CORE	Size:	SheetSize
Author:	ALIENTEK	File:	CORE.SchDoc
Date:	2018-12-14	Version:	Version
Revision:	V1.4		

ALIENTEK

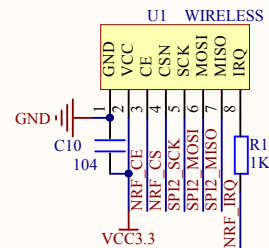
TEMP&HUMI SENSOR



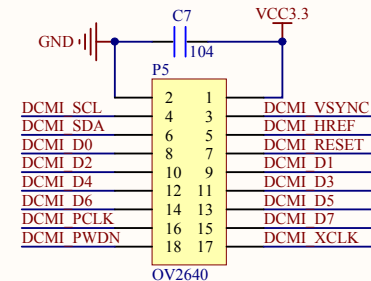
ATK MODULE



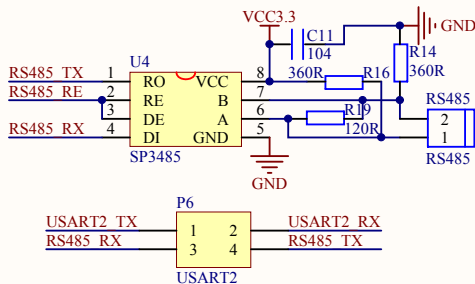
WIRELESS



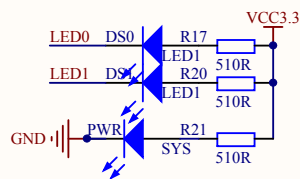
OLED&CAMERA



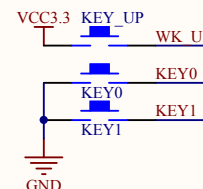
RS485



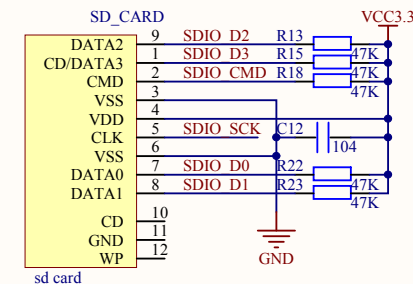
LED



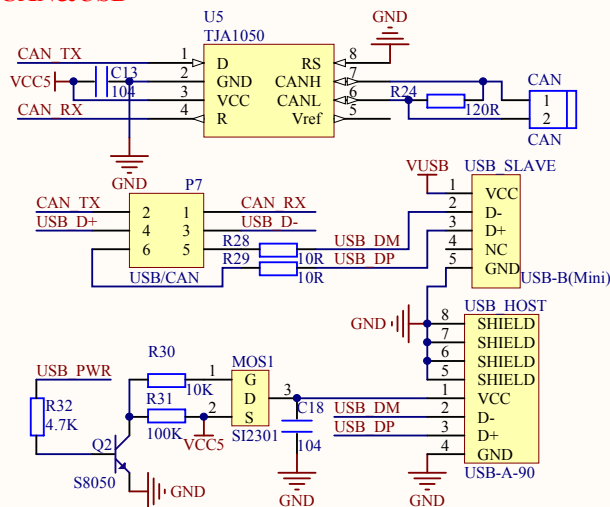
KEY



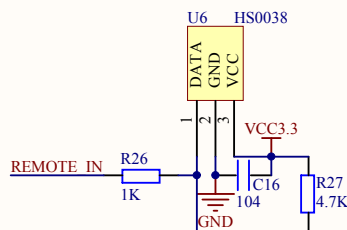
SD CARD



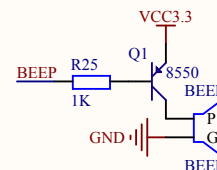
CAN&USB



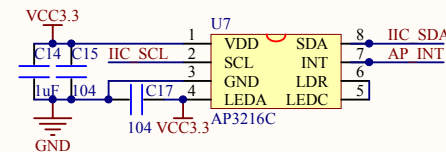
REMOTE



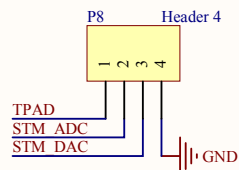
BEEP



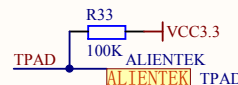
ALS&PS SENSOR



ADC&DAC



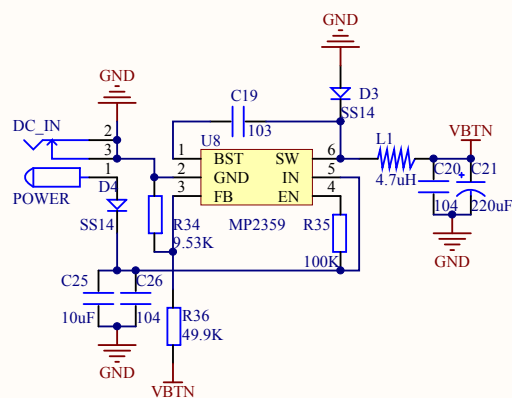
TOUCH_KEY



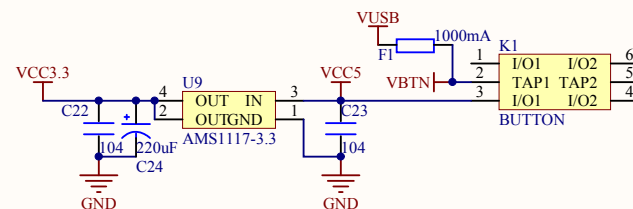
开源电子网: www.openedv.com

Title: APOLLO DEVICE		ALIENTEK
Author: ALIENTEK	Size: SheetSize	
Date: 2018-12-14	File: DEVICE.SchDoc	
Revision: V1.4	Version: Version	

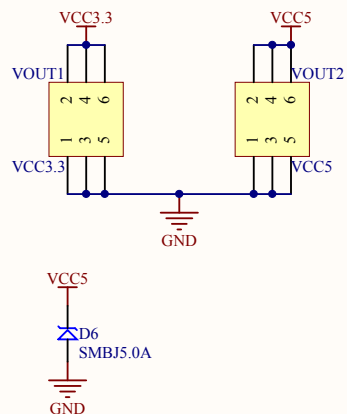
DC POWER IN



3.3V & POWER SWITCH



ON BOARD POWER SOURCE



USB USART&USB POWER

